

Release Notes

Product Name: ProRAE Studio II
Version: V1.8.1
Release Date: May 27, 2014

What's New

This release contains the following enhancements:

1. Support QRAE 3 and AutoRAE 2 Cradle for QRAE 3.
2. Set up instrument and download data log through AutoRAE2 system.
3. Upload instrument's firmware to AutoRAE2 system for updating.
4. Support ETO calibration/bump gas.

Installation and Update Notes

Before installation

Close all other programs before installation.

Installation

1. Load ProRAE Studio II software from the CD, or double-click **ProRAE_Studio_II_V1.8.1_Web.exe**, if you have downloaded the software from the RAE Systems Inc. website.
2. Follow the instructions for installation.
3. Once the software is successfully installed, a "success" window appears. Click "Finish" to exit the installation program.

Previous Versions

ProRAE Studio II v1.8.0

What's New

This release contains the following enhancements:

1. ProRAE Update, a new software utility for automatically checking updates for RAE Systems software products and providing features for easy download.
2. Features to seamlessly register instruments with RAE Systems and ensure better support.
3. Fixes for customer-reported issues. Refer to the "Issues Fixed" section for details.

Issues Fixed

ID	Description
PRsII-225	ProRAE Studio II shows the Man Down Alarm settings enabled for ToxiRAE Pro, which does not support the option.
PRsII-228	ProRAE Studio II cannot open MiniRAE Lite ATEX V1.20.
PRsII-234	ProRAE Studio II should be able to set at "0" to clear the gas configuration.

ProRAE Studio II v1.7.0

What's New

This release contains the following enhancements:

1. ToxiRAE Pro cradle support.
2. Datalog support for MiniRAE Lite.
3. Turkish language support for MultiRAE2 family.
4. Many improvements in print function support.

Issues Fixed

ID	Description
PRsII-179	ProRAE Studio II does not show a confirmation message after successfully uploading firmware to AutoRAE 2.
PRsII-197	ProRAE Studio II fails to set a gas lot number with Chinese-language character set.
PRsII-199	ProRAE Studio II allows setting of span 1 value to 1000 ppm for 9.8eV and 10.6eV lamps in MiniRAE 3000, which leads to erroneous readings.
PRsII-207	ProRAE Studio II fails without showing any message when the user tries to upload a configuration file with a sensor list that does not match the instrument's sensor list.

Supported Instruments

- MiniRAE Lite V1.20
- MiniRAE Lite(ATEX) V1.05B (refer to Known Issue PRSII-228, below)
- ppbRAE 3000 V1.20
- MiniRAE3000 V1.20
- UltraRAE3000 V1.20

- ToxiRAE Pro PID V1.62
- ToxiRAE Pro LEL V1.62
- ToxiRAE Pro V1.62
- MiniRAE Lite(Fumigation) V1.07

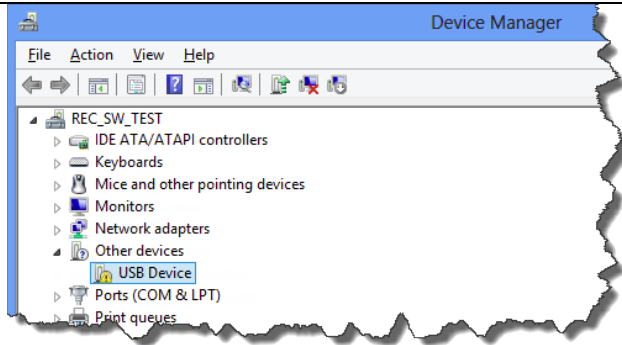
- GammaRAE II R V4.00
- NeutronRAE II(PRM-3020) V2.00
- NeutronRAE II(PRM-3021) V3.01

- MultiRAE Lite(PGM-6200) V1.14
- MultiRAE Lite(PGM-6200D) V1.14
- MultiRAE Lite(PGM-6206) V1.14
- MultiRAE Lite(PGM-6206D) V1.14
- MultiRAE Lite(PGM-6208) V1.14
- MultiRAE Lite(PGM-6208D) V1.14
- MultiRAE(PGM-6220) V1.14
- MultiRAE(PGM-6226) V1.14
- MultiRAE(PGM-6228) V1.14
- MultiRAE Pro(PGM-6240) V1.14
- MultiRAE Pro(PGM-6246) V1.14
- MultiRAE Pro(PGM-6248) V1.14

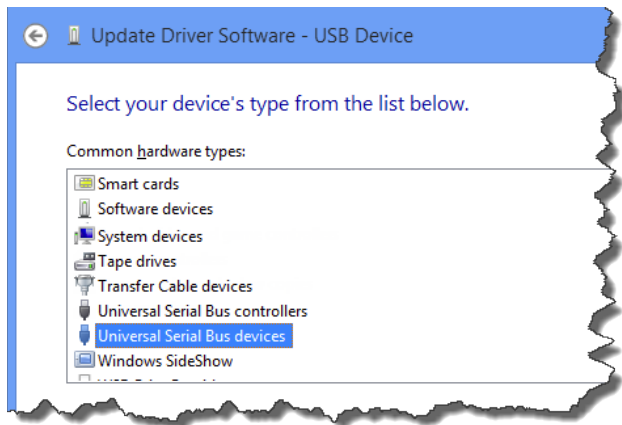
- AutoRAE 2 Controller(DKS-6000) V1.10 (refer to Known Issue PRSII-227, below)
- MultiRAE (Pumped) Cradle(DKS-6001) V1.10
- ToxiRAE Pro Cradle(DKS-6001) V1.10

Known Issue(s) and Workaround(s)

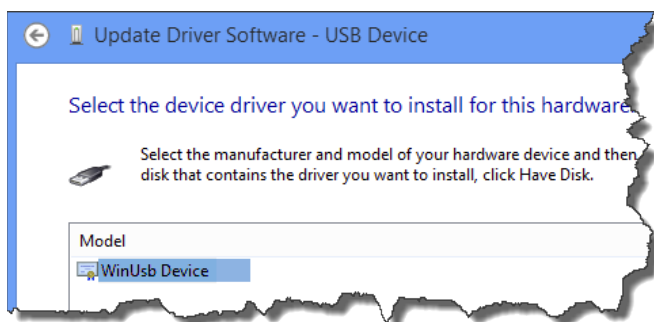
ID	Description
PRSII-227	On Windows 8 platform, AutoRAE 2's controller driver is not automatically installed.
<p>Workaround</p> <p>Follow these steps to manually install the driver:</p> <ol style="list-style-type: none"> 1. Connect the AutoRAE 2 Controller with a PC and turn on the instrument. 2. Open the "Device Manager" window on the PC and double-click "USB Device." 	



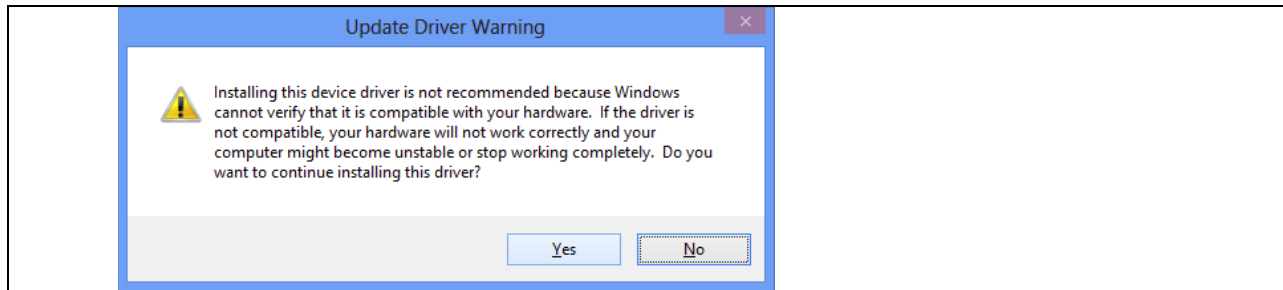
3. In the USB Device Properties dialog box, click “Update Driver.”
4. In the “Update Driver Software – USB Device” dialog box, click “Let me pick from a list of device drivers on my computer.”
5. On the next screen, select “Universal Serial Bus devices” and click “Next.”



6. On the next screen, select “WinUsb Device” and click “Next.”



7. In the “Update Driver Warning” dialog box, select “Yes.”



8. Click “Close” on the next screen.

The driver is now successfully installed. ProRAE Studio II will display the device location as “WinUSB Device(…)” when you select the “Auto Detect” option.

PRsII-228	Can't open ProRAE Studio II file for MiniRAE Lite (ATEX).
-----------	---

Workaround

Open it with ProRAE Studio II V1.6.0.

ProRAE Studio II v1.6.0

What's New

This release contains the following enhancements:

1. Print function support.
2. Support for “Gamma Only” and “Gas Only” mode for new MultiRAE-family instruments.
3. Enable/Disable P2P and Datalog features by special tool script.

Issues Fixed

ID	Description
PRsII-177	Fails to communicate with the instrument when trying to upload Configuration Files while upgrading firmware.
PRsII-178	Discrepancies in instrument times in the datalog and graph.