



Manual SoundCam

Hardware

Transportation case and SoundCam

Transportation case

- 1 SoundCam
- 2 headphones
- 3 power cable part 1
- 4 tripod
- 5 power cable part 2



- 1 On/Off Button and Status LED
- Turn on: Press & Hold (~2 sec.), status LED flashes while booting and turns green when finished.
- Turn Off: Press & Hold until all battery level (4) LEDs are off
- Check battery level: Press short
- 2 USB connector to transfer data to USB stick
- 3 Power jack
- 4 Battery level indicator
- 5 (from below) Input for headphones
- 6 + 7 Buttons for software operations (defined by user)
- 8 Ethernet interface (not supported)

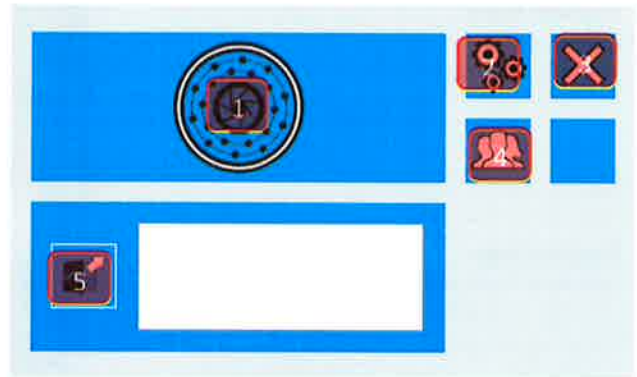


SoundCam

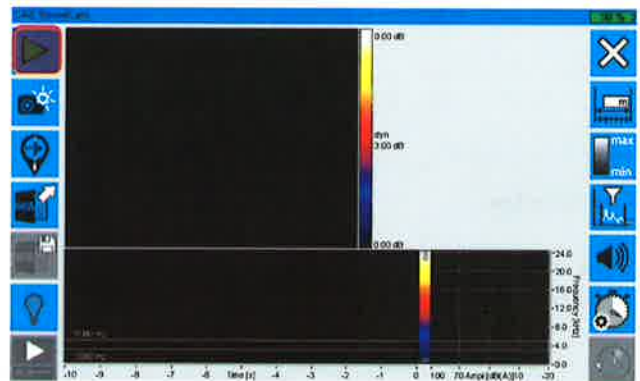
Software - Starter Guide

- 1 Start measurement
- 2 Settings
- 3 Shut system down
- 4 Profile
- 5 Saved measurements

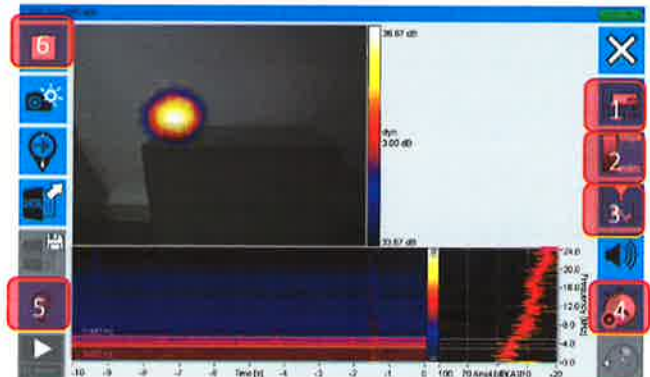
Press 1 – start measurement



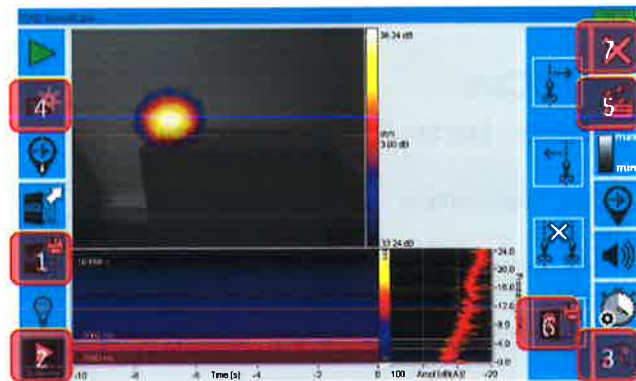
Start



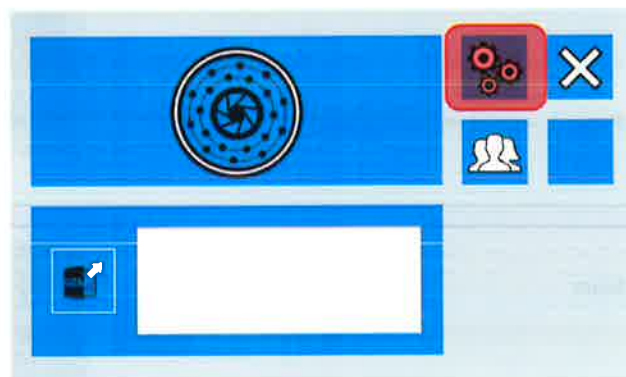
- 1 Distance between mic and surface
- 2 Scaling
- 3 Frequency filter
- 4 Record duration
- 5 Light on/off
- 6 Stop



- 1 Save recording
- 2 Play recording
- 3 Time navigation
- 4 Take snapshot (online/offline)
- 5 Create video
- 6 Save video
- 7 Close window



Press settings

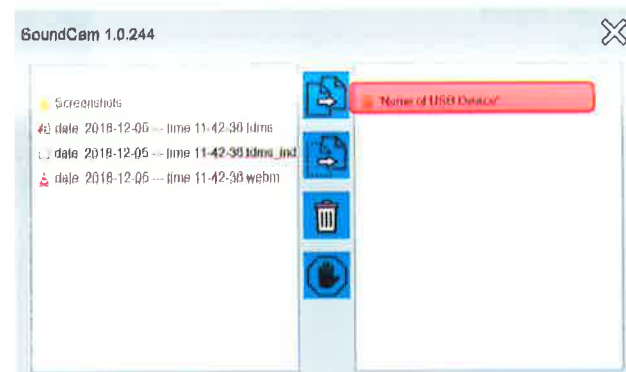


Press button

Plug your USB stick (not included in delivery content) into SoundCam



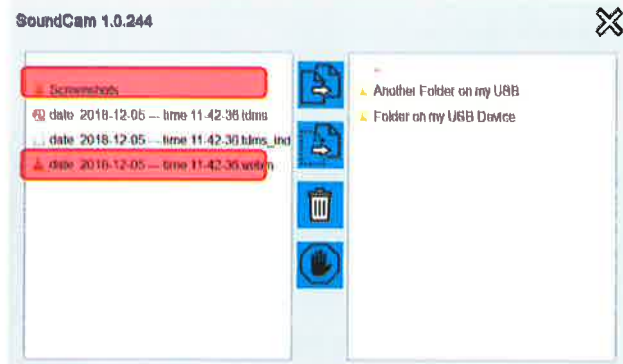
Double-click on your USB stick



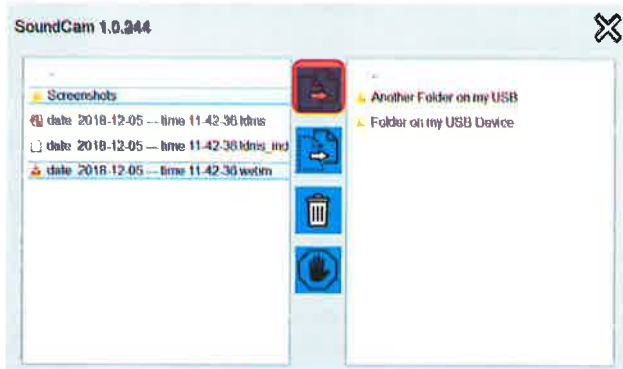
Mark files

Video are *.webm
(can be opened by all internet explorers)

Snapshot are *.png

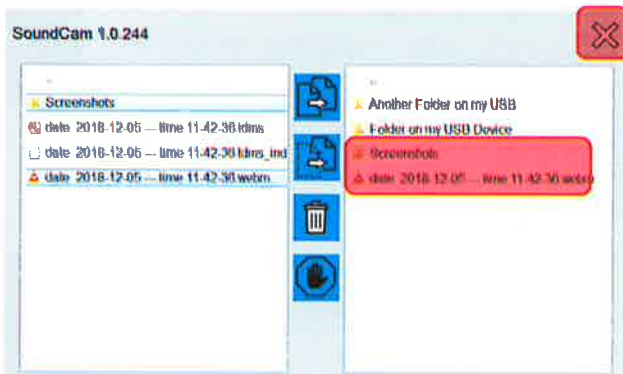


Copy on your USB stick



Copy is done

Close window!



Remove USB stick and enjoy on your PC

SoundCam

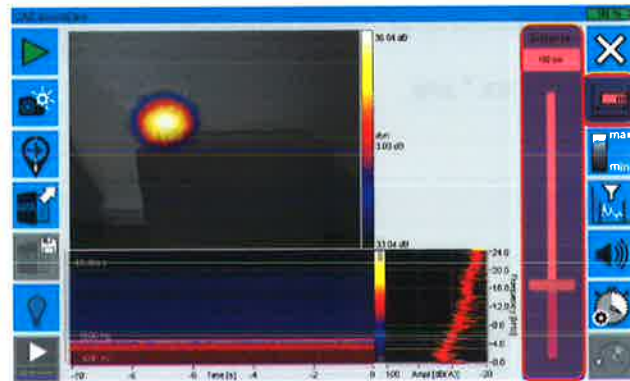
Software - Function Buttons

Distance settings

Set up the distance between the SoundCam and your measurement object by using the slider.

If the measurement object is further away than 350 cm set it to the max level 350cm.

You can also type in numbers by clicking into the Distance box.



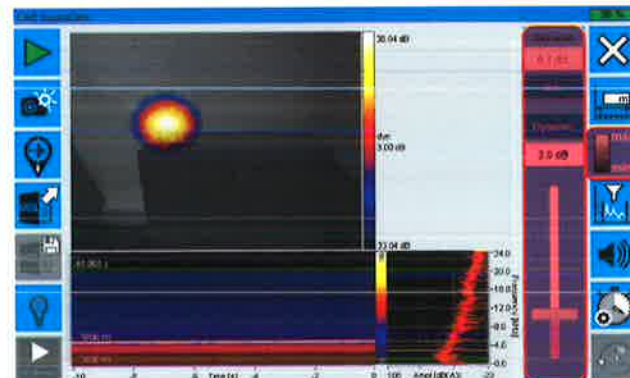
Scaling settings

Choose your scaling by clicking on the first dark blue box: auto -> Max. found in the pictures is used as maximum.

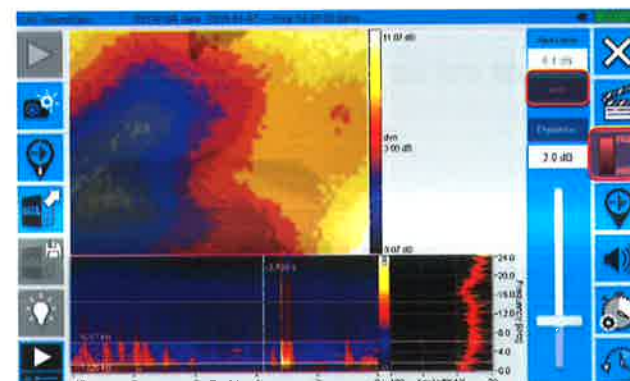
Smart -> Removes background noise. Average level of the picture is calculated and crest factor is added. Off -> Set up maximum level by clicking into the box.

Set up the dynamic range using the slider for auto and off scaling.

For smart scaling set up dynamic range and crest factor. Click on the dark blue box above the slider to change between dynamic range and crest factor.



Auto scaling: you see background noise



SoundCam - Software - Function Buttons

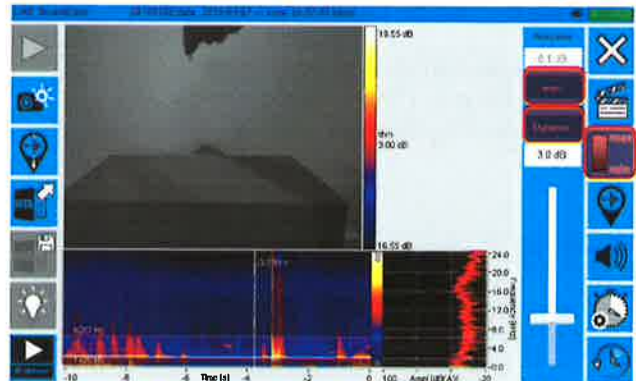
Smart scaling: background noise is removed

Click on Dynamic to see Crest

Move the cursor to adjust the crest factor

Small number = remove less background noise

Big number = remove more background noise

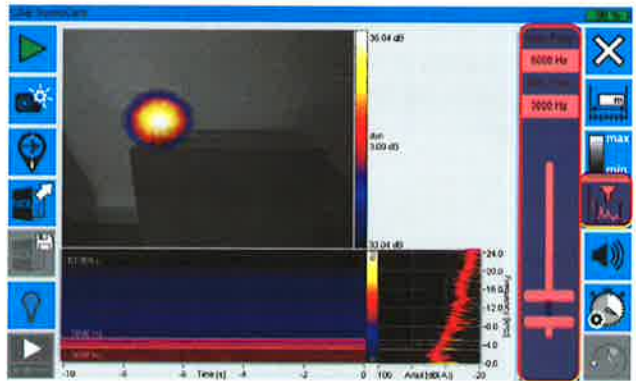


Frequency filter

Select the frequency range you want to see in the acoustic picture using the double slider. You can also type in numbers by clicking into the Max. Freq. or Min. Freq. box.

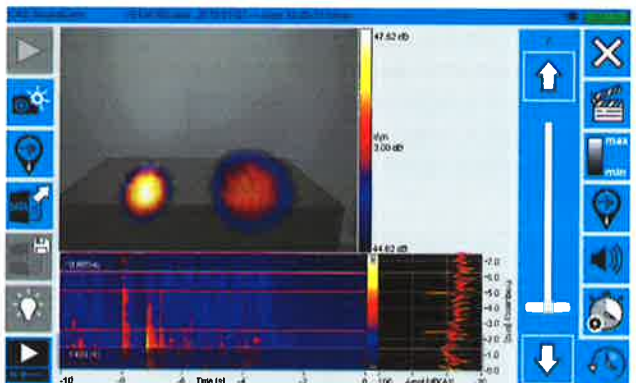
Attention!

Higher frequencies can be localized more accurate than lower frequencies.



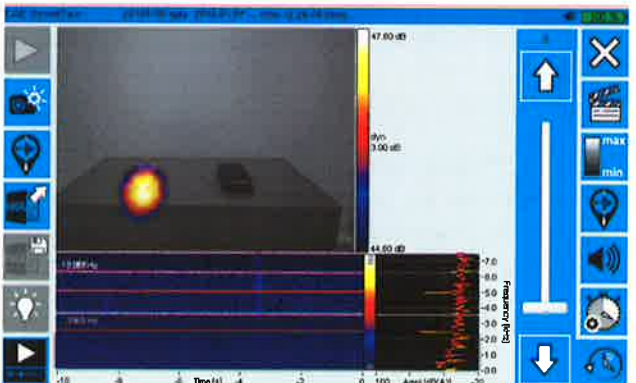
Example:

two noise sources (2,5 kHz and 5 kHz)
set cursors below and above the range e.g. at 1728 Hz and 6267 Hz -> you see two noise sources

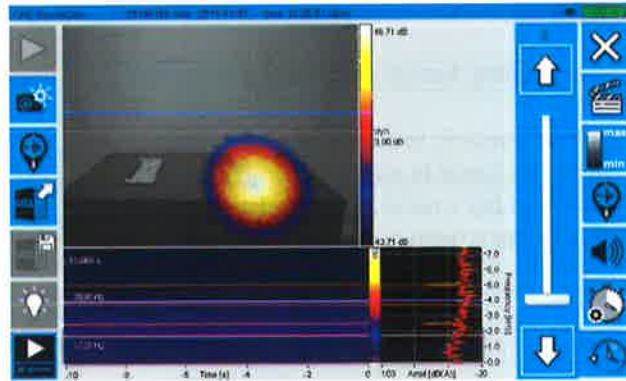


Example:

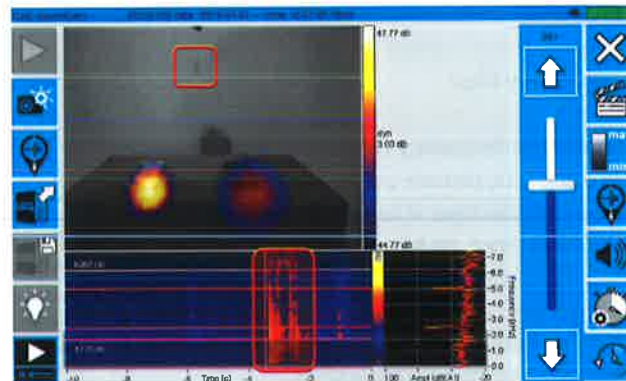
two noise sources (2,5 kHz and 5 kHz)
set cursors e.g. at 3656 Hz and 6267 Hz -> you see just the noise source 5 kHz



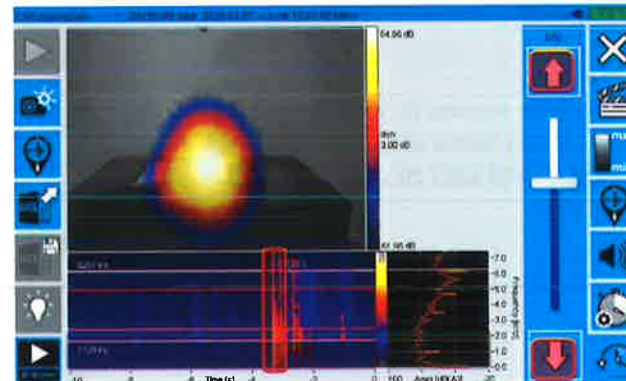
Example:
two noise sources (2,5 kHz and 5 kHz)
set cursors e.g. at 1728 Hz and 3998 Hz -> you
see just the noise source 2,5 kHz



Example :
two noise sources (2,5 kHz and 5 kHz) +
Dropping paper clip (Impulse - see red marker
in sonogram)

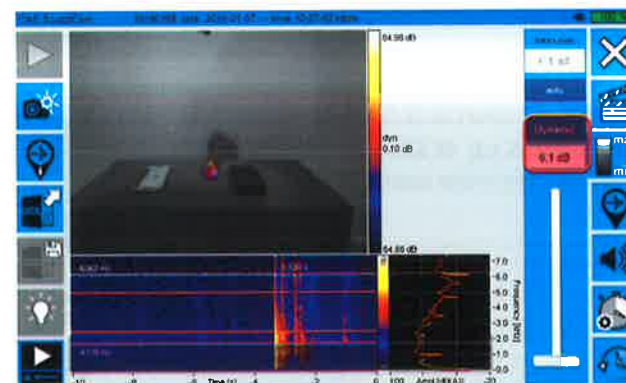


Paper clip hits the ground
Move cursor short before first impulse and
press arrow button in the timeline until the
sound level increases -> new noise source
comes up (the paper clip hits the ground)



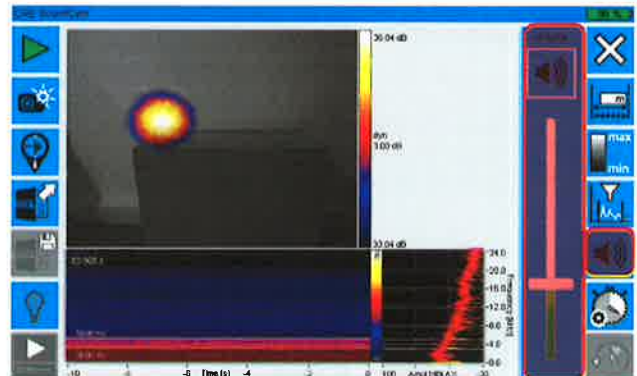
Reduce the dynamic range to see the place of
impact

This "step by step method" is perfect for high
dynamic events e.g. S&R, for structure,
material and component tests,...



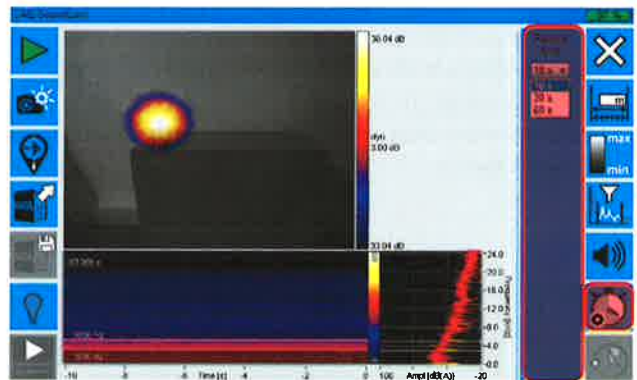
SoundCam - Software - Function Buttons

Sound setting (use headphones)
Enable/disable sound by using the button above the slider.
With enabled sound use the slider to increase/decrease volume.



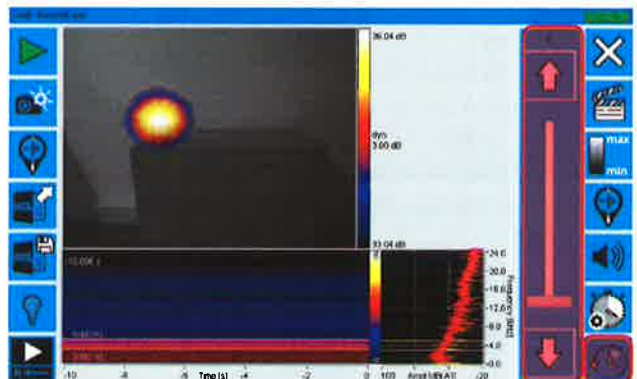
Record duration settings
Select the time you want to record using the drop down menu.

Attention!
Longer record times take longer to process
(e.g. saving, opening and create a video)

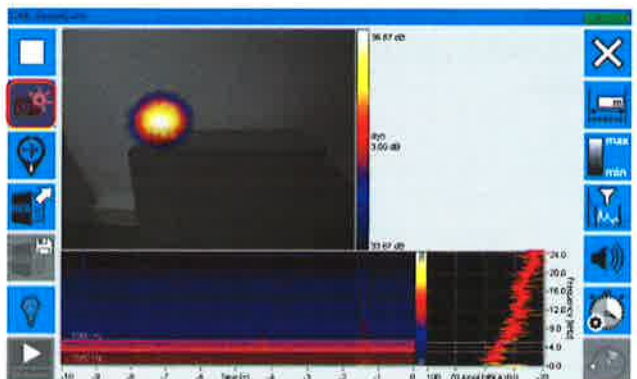


Scroll your measurement's timeline:
After measurement or after open data
Use the up and down arrows (acoustic pic by acoustic pic) or the slider to scroll through your timeline of your measurement.

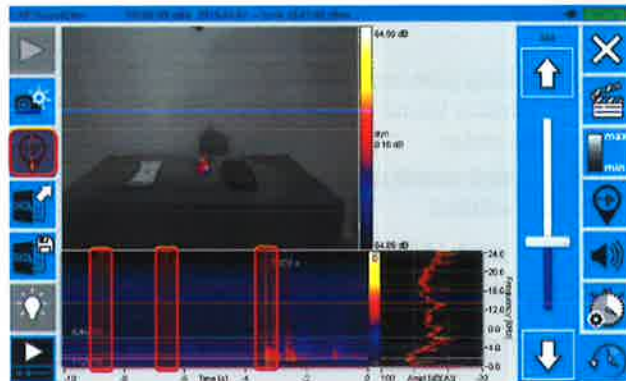
Touchscreen: move cursor direct in the sonogram by touching



Take snapshot (*.png)

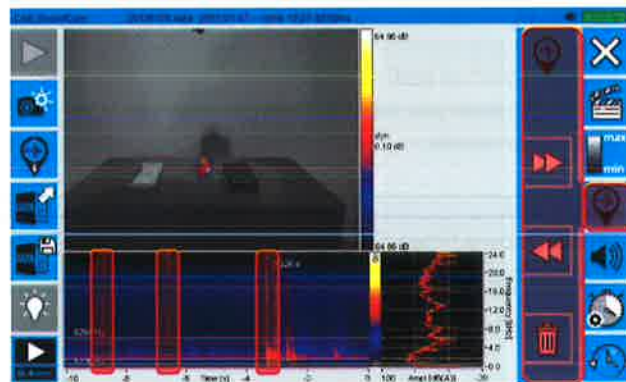


Place markers during or after measurement



Time marker settings:

Use the right/left arrow to jump to the next/previous marker you have set.
Press the delete button to delete the current selected marker.

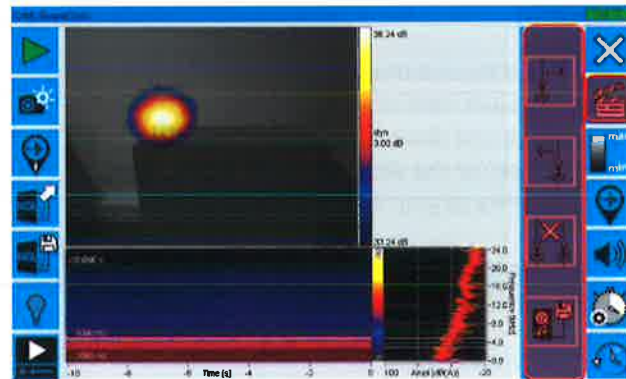


Create video:

Use the first two buttons to place the start and end point for the video if you do not want to create a video over the whole timeline.
The third buttons removes the start and end point. Use the button on the bottom to create the video.

Attention!

Longer record times take longer to create a video.



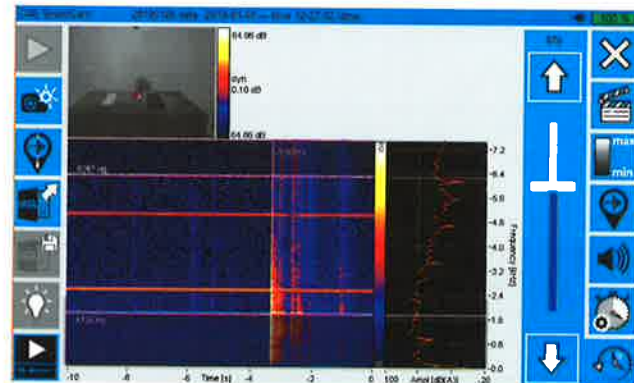
Video settings press OK after calculation close window



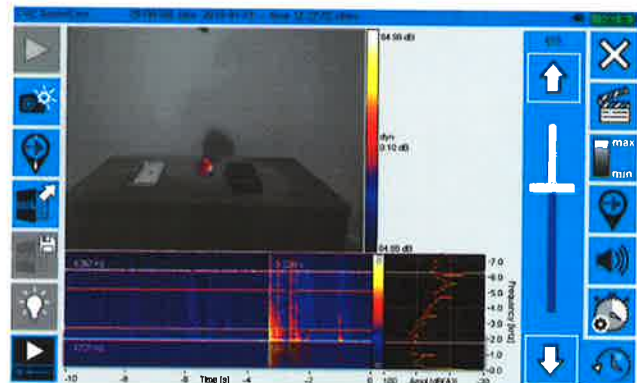
SoundCam

Software – zoom in/zoom out

Zoom in/zoom out sonogram:
Double click on the sonogram

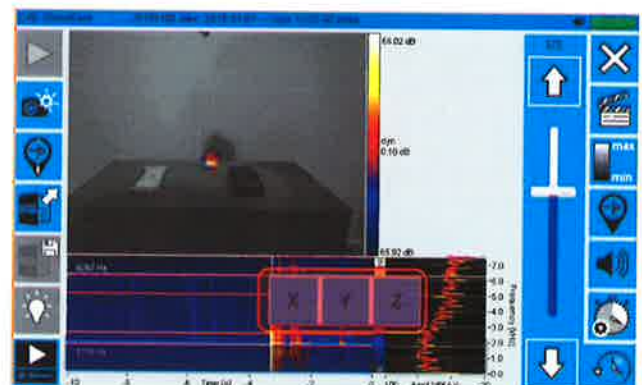


Zoom in/zoom out optical picture: double click
on the optical picture



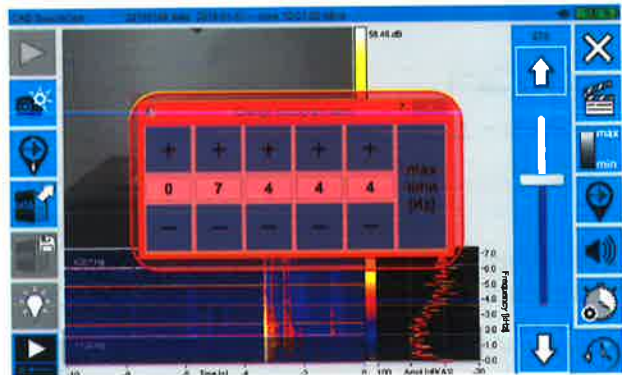
Zoom inside sonogram:
Click long in the sonogram -> XYZ pops up
Press X for min/max of the x-axis
Press Y for min/max of the y-axis
Press Z for min/max of the z-axis

Zoom inside sonogram:
Touchscreen function –zoom in by spreading
2 fingers and move area by moving 2 fingers

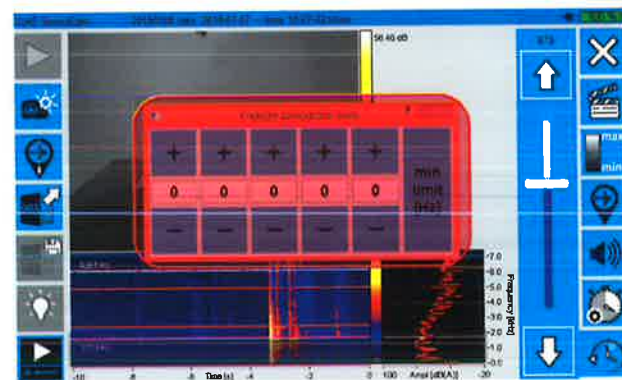


E.g. press Y for min/max of the y-axis
choose the max value by +/- and press "max limit"

Press outside the window to close the window
or press "max limit" to set the "min limit"



After pressing "max limit" the "min limit"
comes up and choose the min value by +/-



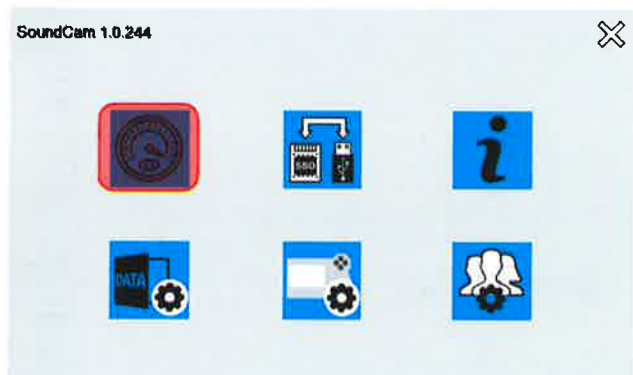
SoundCam

Software – system settings

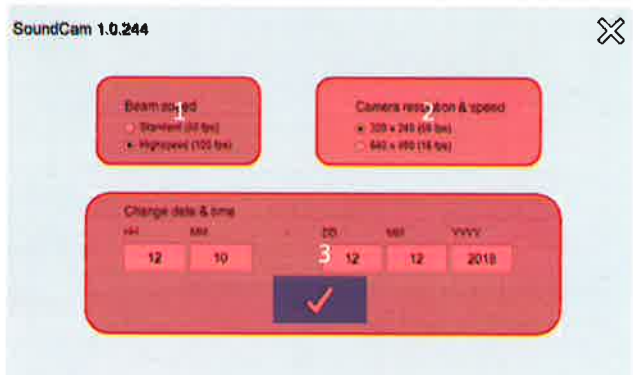
- 1 Camera and beam settings
- 2 Copy menu
- 3 Info and update
- 4 Folder setting
- 5 Button settings
- 6 Profile settings



- 1 Camera and beam settings



- 1 Beam speed
- 2 Camera resolution & speed
- 3 Change date & time



Info and update



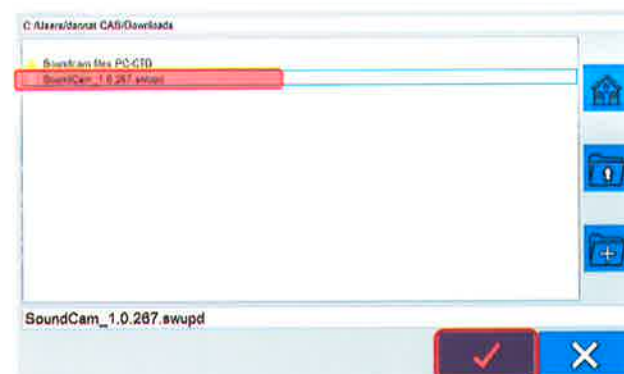
System information



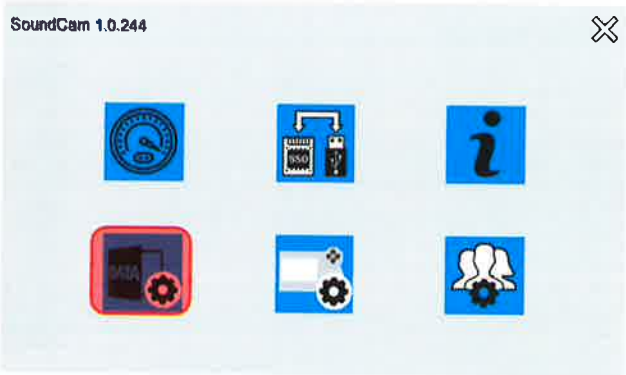
Update your system



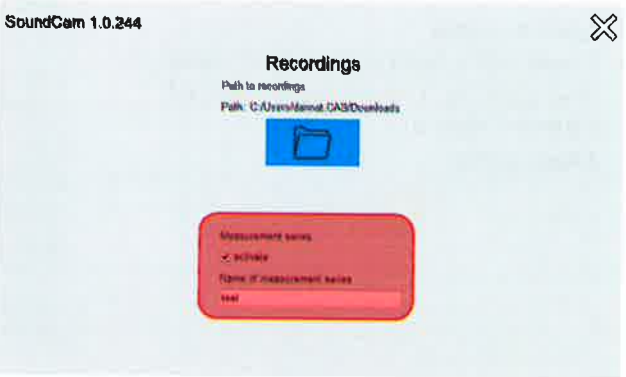
Select your SoundCam update *.swupd
your system will be updated



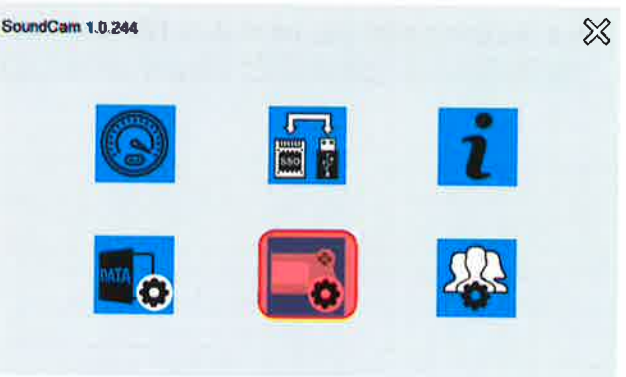
Folder settings



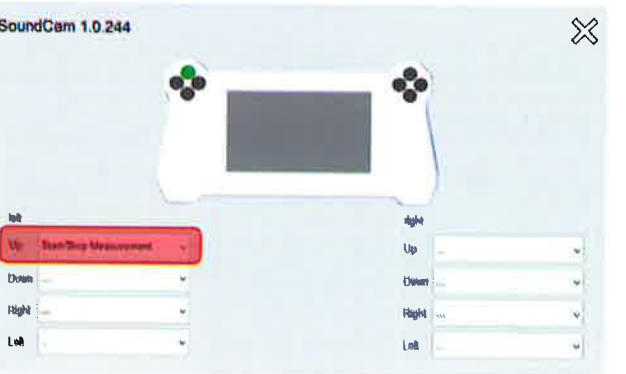
Activate measurement series
and put in measurement series name



Button settings



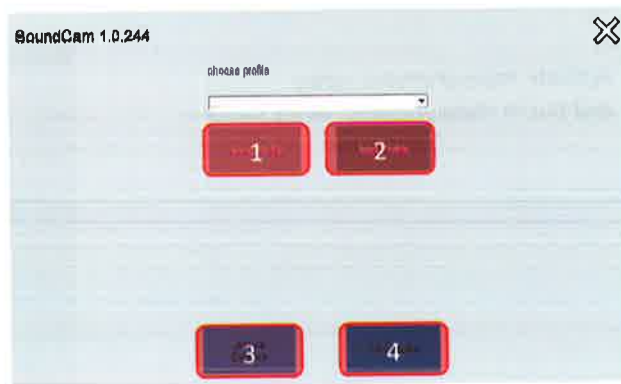
Select a function from the pull down menu



Profile settings



- 1 Delete profile
- 2 Load profile from the pull down menu
(load a profile -> all settings are defined)
- 3 Restore defaults
- 4 New profile



Find the latest software, up-to-date FAQ and much more on our website:
<http://www.cae-systems.de/en/soundcam-owners>



CAE Software und Systems GmbH
Linteler Straße 23
33334 Gütersloh
Germany

Tel.: +49 (0) 5241/21142-0
Fax.: +49 (0) 5241/21142-29
info@cae-systems.de

www.cae-systems.de

Geschäftsführer
Handelsregister

Bankverbindung

Dipl.-Ing., MBA Nico Zurmühlen
Gesellschaft mit Sitz in Gütersloh Amtsgericht Gütersloh HRB 8913
USt-ID-Nr. DE 261252045 St.-Nr. 351/5710/1607
Sparkasse Beckum-Wadersloh Kto.-Nr. 60368 BLZ 41250035
IBAN: DE15 4125 0035 0000 0603 68 SWIFT-BIC: WELADED1BEK